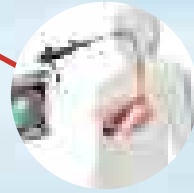
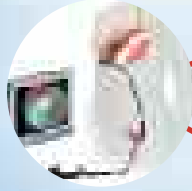


# NOTES™



## NewYork-Presbyterian Hospital First Annual International NOTES™ Course

December 10–11, 2007  
New York City

 **NewYork-Presbyterian**  
The University Hospital of Columbia and Cornell

 **COLUMBIA UNIVERSITY**  
*College of Physicians  
and Surgeons*



Weill Cornell Medical College



This course is endorsed by  
the American Society for  
Gastrointestinal Endoscopy

## Program Description and Target Audience

NewYork-Presbyterian Hospital's First Annual International NOTES™ Course is a two day program, presented by NewYork-Presbyterian Hospital, Weill Cornell Medical College and Columbia University College of Physicians and Surgeons. This course is designed for surgeons and gastroenterologists who are interested in developing an understanding of the challenges and benefits of Natural Orifice Translumenal Endoscopic Surgery (NOTES), and learning interventional techniques applicable to NOTES.

Live and preserved tissue labs will be offered in the afternoon sessions, based on a first-come, first-serve basis.

## Objectives

After the program participants will:

- comprehend the present-day limitations and opportunities of NOTES technology
- understand how to select the best candidates for the procedure
- gain an understanding of the importance of hybrid procedures and patient selection
- review IRB and research ethics, as these techniques are still in development
- learn how to set up a NOTES lab, develop technical skills and become familiar with instrumentation
- gain hands-on experience with guided training models\*
- gain an understanding of the various NOTES anatomical approaches under direct faculty guidance on animals and cadavers for those registered for lab sessions\*

\*For those registered for the labs

## Accreditation/Designation of Credit

The College of Physicians and Surgeons of Columbia University is accredited by the Accreditation Council for Continuing Medical Education (ACCME) to provide continuing medical education for physicians.

The College of Physicians and Surgeons designates this educational activity for a maximum of *14.5 AMA PRA Category 1 Credits*™. Physicians should only claim credit commensurate with the extent of their participation in the activity.

This program has been planned and produced in accordance with the Essential Areas and Policies of the Accreditation Council for Continuing Medical Education (ACCME).

This course is jointly sponsored by NewYork-Presbyterian Hospital/The University Hospital of Columbia and Cornell, Weill Cornell Medical College, Columbia University College of Physicians and Surgeons and endorsed by the American Society for Gastrointestinal Endoscopy (ASGE) and the New York Society for Gastrointestinal Endoscopy (NYSGE).

## Disclosure

The College of Physicians and Surgeons must ensure balance, independence, objectivity, and scientific rigor in its educational activities. All faculty participating in this activity are required to disclose to the audience any significant financial interest and/or other relationship with the manufacturer(s) of any commercial product(s) and/or provider(s) of commercial services discussed in his/her presentation and/or the commercial contributor(s) of this activity. When unlabeled uses are discussed, these will also be indicated.

## Acknowledgements

Support for this program is partially provided by educational grants from Olympus Surgical America, Inc., Applied Medical, USGI Medical, Inc., and Power Medical Interventions. Additional support is expected.

## Contact Information

Columbia University College of Physicians and Surgeons  
Department of Surgery, External Affairs  
400 Kelby Street • 8th Floor  
Fort Lee, New Jersey 07024  
Josephine Caputo, CST  
Telephone: 201.346.7003 • Fax: 201.346.7011 • Email: jc2768@columbia.edu

### Program Directors

#### **Marc Bessler, MD**

Assistant Professor of Surgery, Department of Surgery  
Director, Laparoscopic Surgery  
Columbia University College of Physicians and Surgeons  
NewYork-Presbyterian Hospital

#### **Jeffrey W. Milsom, MD**

The Jerome J. DeCosse Professor  
Professor of Colon and Rectal Surgery  
Section Chief of Colon and Rectal Surgery  
Professor of Surgery  
Weill Medical College of Cornell University  
NewYork-Presbyterian Hospital

#### **Peter D. Stevens, MD**

Assistant Professor of Clinical Medicine  
Director of Endoscopy  
Director of Interventional Endoscopy  
Division of Digestive and Liver Disease  
Columbia University Department of Medicine  
NewYork-Presbyterian Hospital

### Program Administrators

#### **Deborah Schwarz-McGregor, RPA-C**

Executive Director and  
Chief Communications Officer  
Department of Surgery, External Affairs  
Columbia University Medical Center  
Telephone: 201.346.7012  
Email: ds348@columbia.edu

#### **Nicole Kail, MPH**

Administrative Director  
Digestive Diseases Service Line  
NewYork-Presbyterian Hospital

### Program Coordinator

#### **Josephine Caputo, CST**

Events Coordinator  
Department of Surgery  
External Affairs  
Columbia University Medical Center  
Telephone: 201.346.7003 • Email: jc2768@columbia.edu

## Faculty

### **Marc Bessler, MD**

Assistant Professor of Surgery  
Director, Laparoscopic Surgery  
Department of Surgery  
Columbia University College of  
Physicians and Surgeons  
NewYork-Presbyterian Hospital

### **Amitabh Chak, MD**

Professor of Medicine and Oncology  
University Hospital /Case Medical Center  
Head of Clinical Research, Division of  
Gastroenterology University Hospitals of Cleveland

### **Kenneth A. Forde, MD**

José M. Ferrer Professor Emeritus of Clinical Surgery  
Columbia University College of  
Physicians and Surgeons

### **Dennis L. Fowler, MD**

United States Surgical Professor of Clinical Surgery  
Director, Minimal Access Surgery Center  
Columbia University College of  
Physicians and Surgeons  
NewYork-Presbyterian Hospital

### **Juergen Hochberger, MD, PhD**

Professor of Medicine  
Chief Department of Medicine III  
Gastroenterology, Interventional Endoscopy  
St. Bernward Academic Teaching Hospital

### **Anthony N. Kalloo, MD**

Professor of Medicine  
Chief, Division of Gastroenterology and Hepatology  
The Johns Hopkins Hospital

### **Michael Li, MBBS, FRCS, FRCSE**

Chief of Service, Department of Surgery  
Director, Minimal Access Surgery  
Training Center Pamela Youde Nettersole  
Eastern Hospital Hong Kong

### **Jeffrey M. Marks, MD, FACS**

Associate Professor  
Department of General Surgery  
Director of Surgical Endoscopy  
University Hospitals Case Medical Center

### **Kai Matthes, MD, PhD**

Advanced Endoscopy Research Fellow  
Department of Gastroenterology  
Beth Israel Deaconess Medical Center  
Harvard Medical School

### **Luca Milone, MD**

Minimally Invasive Surgery Research Fellow  
Department of Surgery, Division of General Surgery  
Columbia University College of  
Physicians and Surgeons  
NewYork-Presbyterian Hospital

### **Jeffrey W. Milsom, MD**

The Jerome J. DeCosse Professor  
Professor of Colon and Rectal Surgery  
Section Chief of Colon and Rectal Surgery  
Professor of Surgery  
Weill Medical College of Cornell University  
NewYork-Presbyterian Hospital

### **Kiyokazu Nakajima, MD, PhD**

Assistant Professor of Surgery  
Section of Gastroenterological Surgery  
Osaka University Graduate School of Medicine  
Vice-Chair, Endoscopic Surgery Training Course  
Osaka University Hospital

### **Mark B. Pochapin, MD**

Associate Professor of Clinical Medicine  
Director of the Jay Monahan Center for  
Gastrointestinal Health  
NewYork-Presbyterian Hospital  
Chief of GI Endoscopy  
Weill Cornell Medical College

### **Alfons Pomp, MD**

Associate Professor of Surgery  
Frank Glenn Faculty Scholar  
Chief of Laparoscopic Bariatric Surgery  
Weill Cornell Medical College  
NewYork-Presbyterian Hospital

### **Richard I. Rothstein, MD**

Chief, Section of Gastroenterology and Hepatology  
Dartmouth-Hitchcock Medical Center  
Professor of Medicine, Dartmouth Medical School

### **Francesco Rubino, MD**

Assistant Professor of Surgery  
Weill Cornell Medical College  
Chief of the Section on Gastrointestinal  
Metabolic Surgery, NewYork-Presbyterian Hospital

### **Toyooki Sonoda, MD**

Assistant Professor of Surgery  
Colon and Rectal Surgery  
Weill Cornell Medical College  
NewYork-Presbyterian Hospital

### **Nathaniel J. Soper, MD**

Loyal and Edith Davis Professor  
Northwestern University Feinberg School of Medicine  
Chairman, Department of Surgery  
Surgeon-in-Chief, Northwestern Memorial Hospital

### **Peter D. Stevens, MD**

Assistant Professor of Clinical Medicine  
Director of Endoscopy  
Director of Interventional Endoscopy  
Division of Digestive and Liver Disease  
Columbia University Department of Medicine  
NewYork-Presbyterian Hospital

### **Christopher C. Thompson, MD**

Associate Physician, Gastroenterology  
Brigham and Women's Hospital  
Harvard Medical School

### **Mark H. Whiteford, MD**

Assistant Professor of Surgery  
Oregon Health & Science University

### **Ricardo Zorron, MD, PhD**

Professor and Chairman, Department of Surgery  
University Hospital Teresopolis HCTCO FESO  
Rio de Janeiro, Brazil





## Day 1: Monday, December 10, 2007

### Meeting Location

NewYork-Presbyterian Hospital/  
Columbia University Medical Center  
P&S Amphitheater One  
630 West 168th Street (at Broadway)  
1st Floor  
New York, NY 10032

### Parking

Discounted parking is available at the Columbia University Medical Center parking lot, located on the southwest corner of Fort Washington Avenue and West 165th Street. To take advantage of discounted parking, please make your request on the registration form. Discount vouchers will be distributed onsite.

## Day 2: Tuesday, December 11, 2007

### Meeting Location

NewYork-Presbyterian Hospital/  
Weill Cornell Medical Center  
Uris Auditorium  
1300 York Avenue (at 69th Street)  
New York, NY 10021

### Parking

NewYork-Presbyterian Hospital/  
Weill Cornell Medical Center  
Main entrance (valet parking)  
525 East 68th Street (at York Ave.)  
New York, NY 10021  
For rates call: 212-746-1886

### Lodging

The Sheraton New York Hotel & Towers  
811 7th Avenue (between 52<sup>nd</sup> & 53<sup>rd</sup> Sts.)  
New York, NY 10019  
212-581-1000 • 888-627-7067

#### Hotel Rates:

\$379/night, plus tax (single, double, triple)  
Group rate available until **November 23, 2007**.  
Subject to availability.

Book on-line at:

<http://www.starwoodmeeting.com/Book/NotesCourse>

### Registration

**Mail:** NewYork-Presbyterian Hospital  
Department of Surgery, External Affairs  
400 Kelby Street, 8th Floor,  
Fort Lee, New Jersey 07024

**Online:** [www.ColumbiaSurgeryCME.org](http://www.ColumbiaSurgeryCME.org)

**By Fax:** Registrants may fax both forms with credit card information to 201.346.7011

## Registration

Because this is an advanced course, please answer the following questions.

Please make sure you have registered for the didactic sessions before completing the registration form below. You will be charged \$350 for the didactic sessions ONLY.

**Please Note:** Participation in the Animal and Cadaver Labs is based on availability. Once your application is reviewed and if space is available, you will receive a link to finalize your registration for the cadaver lab at an additional \$1500, and/or the animal lab at an additional \$800.

I am interested in participating in the:  Animal Lab  Cadaver Lab

If you are a surgeon, do you regularly perform endoscopy?  yes  no

Please describe your endoscopic practice:

---

---

---

---

---

---

---

---

Have you performed NOTES in an animal or cadaver model?  yes  no

Please describe:

---

---

---

---

---

---

---

---

Do you have an animal or cadaver lab available?  yes  no

Please describe:

---

---

---

---

---

---

---

---



NewYork-Presbyterian Hospital  
Department of Surgery  
400 Kelby Street, 8th Floor  
Fort Lee, New Jersey 07024

# **NewYork-Presbyterian Hospital First Annual International NOTES™ Course**

**December 10–11, 2007  
New York City**

*Presented by:*  
NewYork-Presbyterian Hospital

Weill Cornell Medical College

Columbia University  
College of Physicians and Surgeons