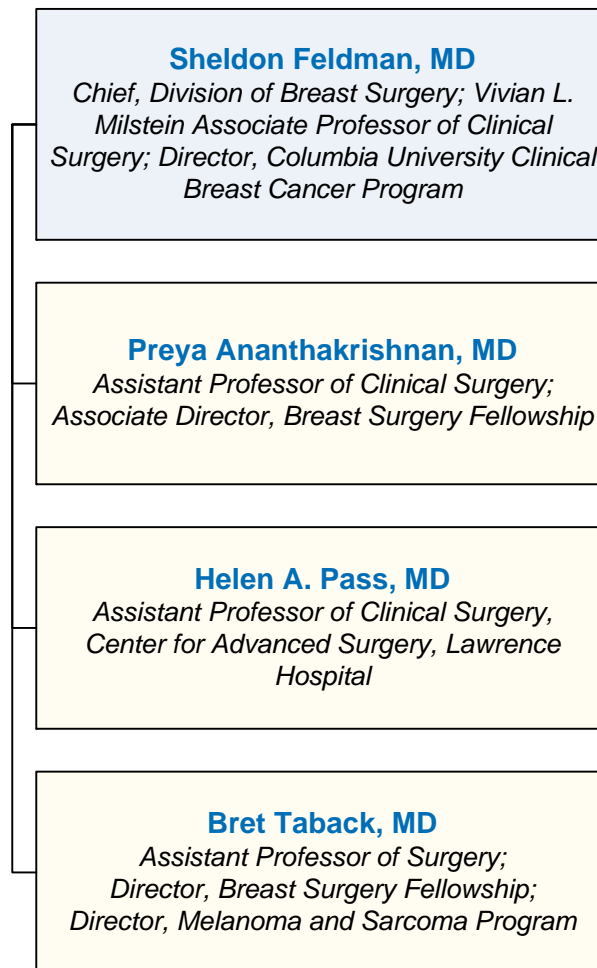


BREAST SURGERY AND MELANOMA & SARCOMA

- Department of Surgery Faculty
- Affiliated Columbia & Cornell Faculty
- Directors
- PAs, NPs, and Nurse Coordinators
- Coordinators, Administrators, Managers, and Specialists



**PHYSICIAN ASSISTANTS, NURSE PRACTITIONERS,
AND NURSE COORDINATORS**
Julie Park, NP
Nancy Rosenthal, NP
Maryann Vella, RN, OCN